

Bass clef / Two octaves down

XIIX
CANONS MÉLODIEUX
OU
VI. SONATES EN DUO
A

Flutes Traverses, ou Violons, ou Basses de Viole

Paris 1738

Georg Philipp Telemann
1681 – 1767

Published by Johan Tufvesson.

Non-commercial copying welcome

Revision : 1.2

Sonata I

Vivace

Georg Philipp Telemann (1681–1767)

4

7

9

12

15

18

21

24

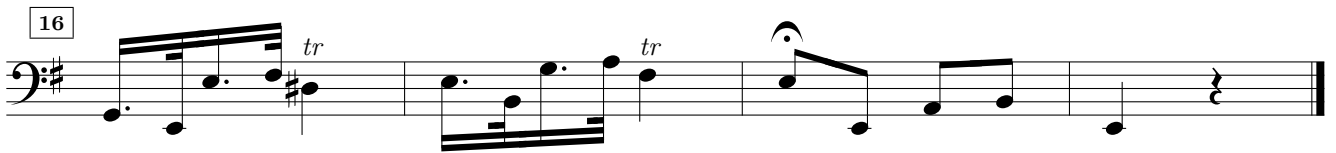
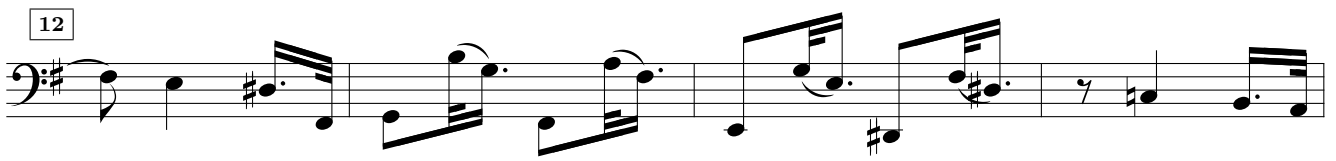
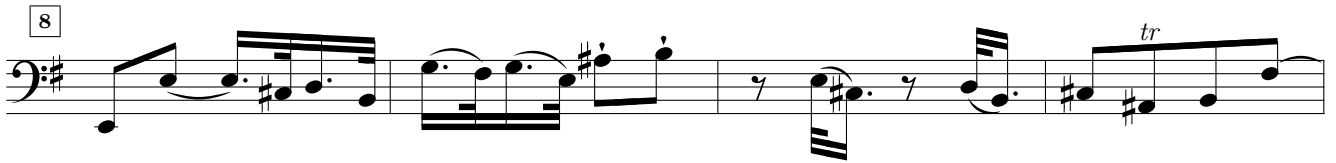
27

30

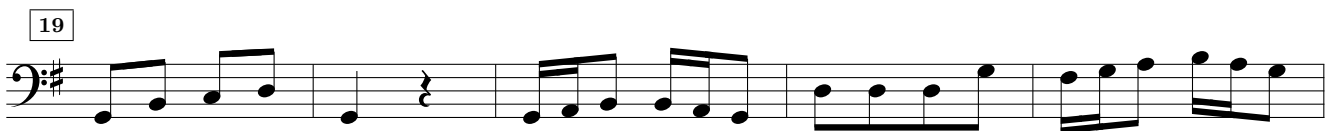
32

Adagio

Sonata I - Two octaves down



Allegro



36

42

48

54

60

66

72

77

82

89

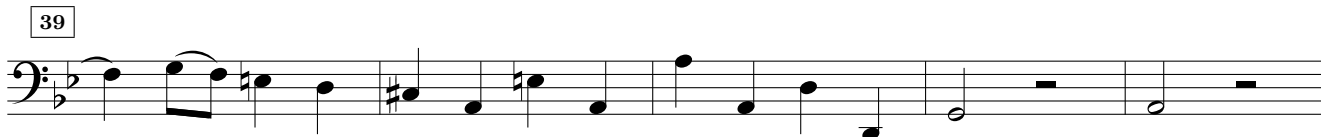
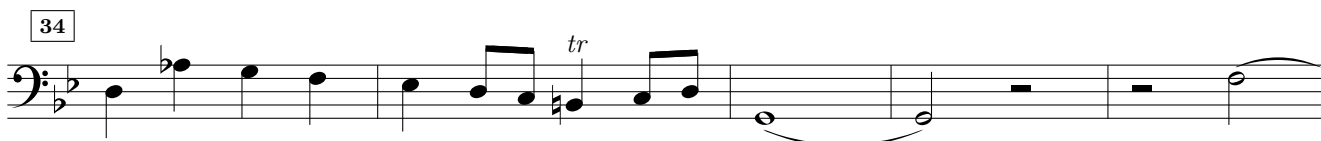
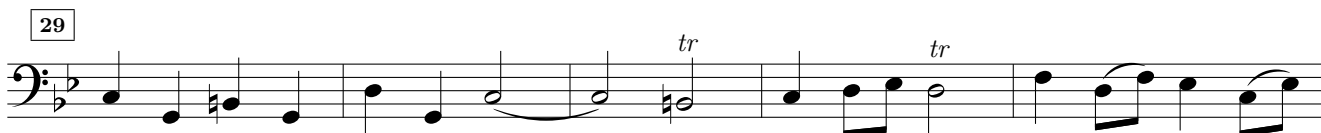
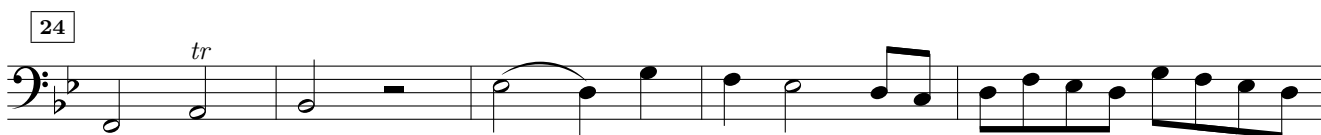
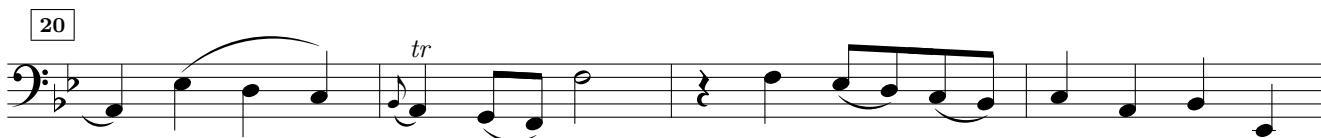
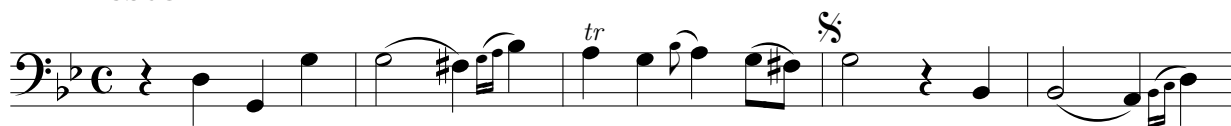
95

Detailed description: This page contains ten staves of musical notation for a bassoon part. Each staff begins with a measure number in a box. The music is written in bass clef with a key signature of one sharp (F#). The notation includes various rhythmic values, slurs, and trills (tr). The piece concludes with a double bar line at the end of the final staff.

Sonata II

Georg Philipp Telemann (1681–1767)

Presto



53

58

63

68

73

Largo

5

9

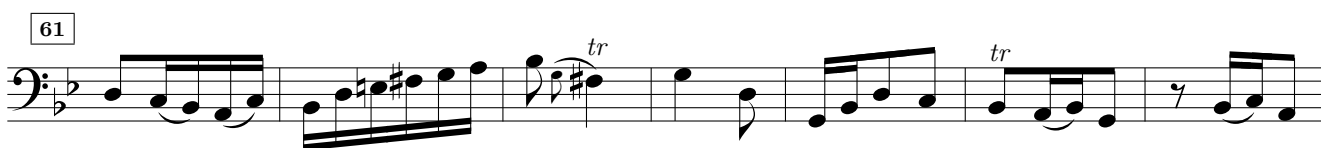
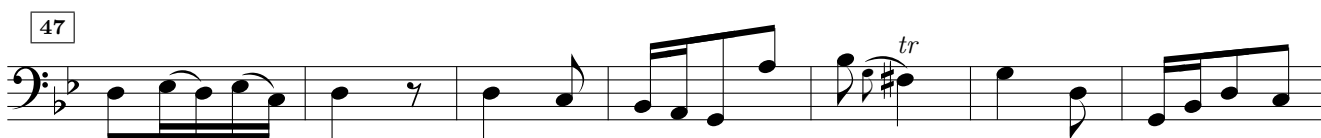
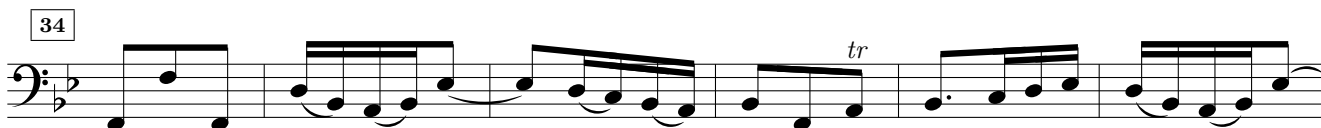
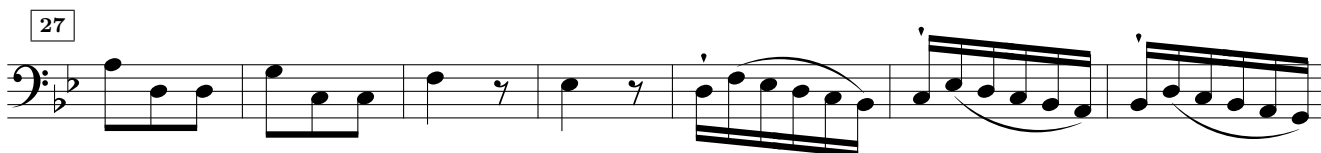
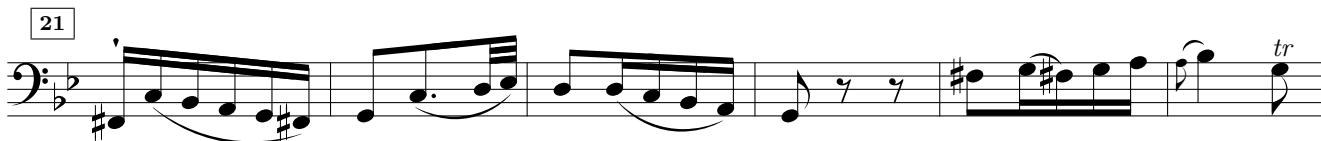
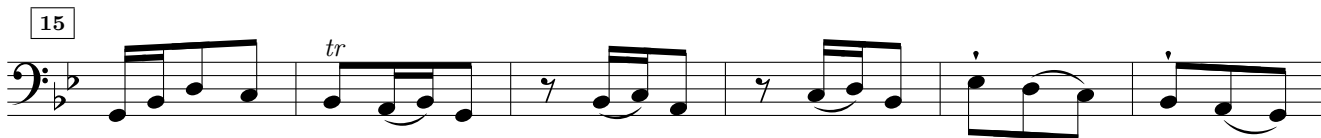
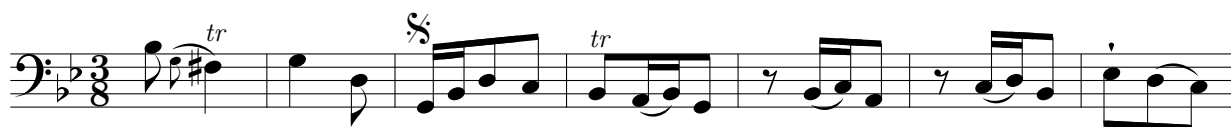
13

18

22

Vivace

Sonata II - Two octaves down



Sonata III

Spiritoso

Georg Philipp Telemann (1681-1767)

4

8

12

16

20

24

27

30

34

37

41

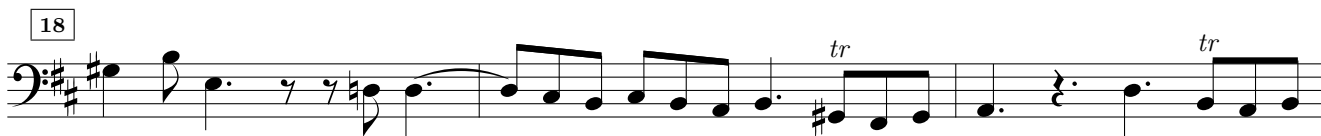
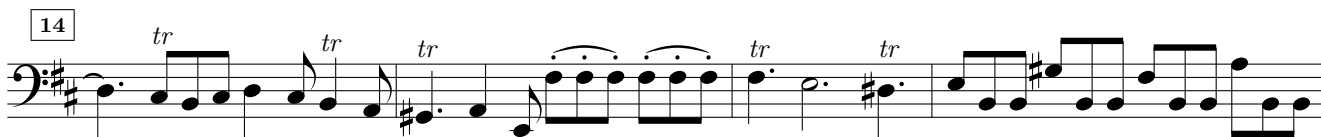
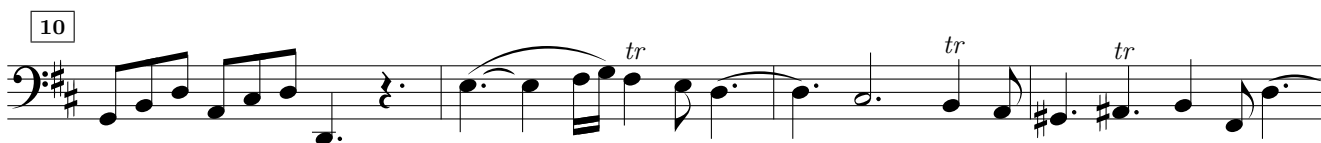
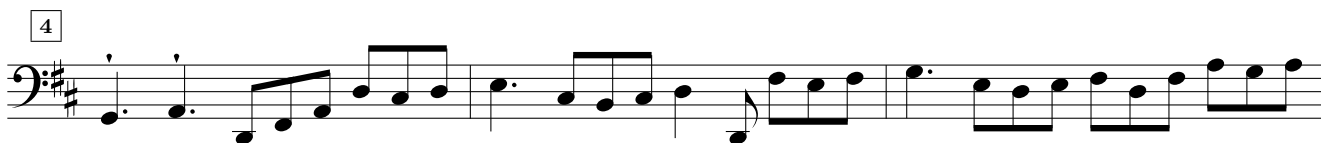
44

Larghetto

Sonata III - Two octaves down



Allegro assai



24

27

30

33

37

41

45

48

52

55

58

Sonata IV

Vivace ma moderato

Georg Philipp Telemann (1681–1767)

6

10

14

19

24

29

34

39

44

49

54

Piaceuole non Largo *Sonata IV - Two octaves down*

3

6

9

11

14

17

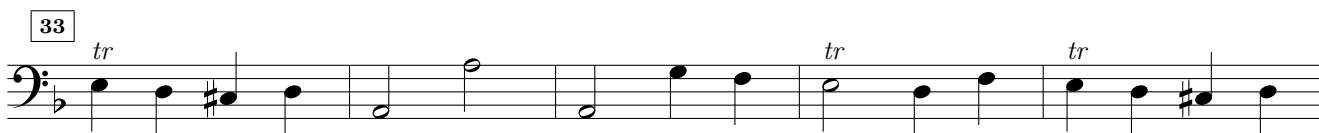
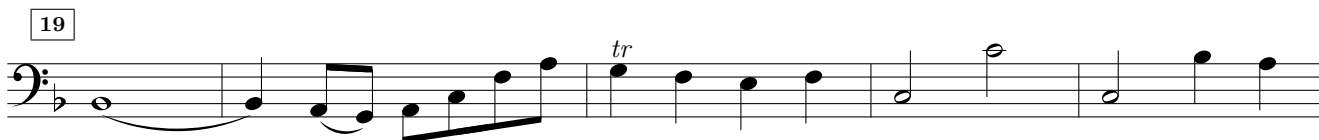
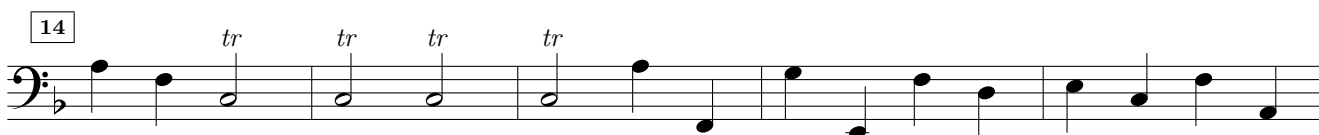
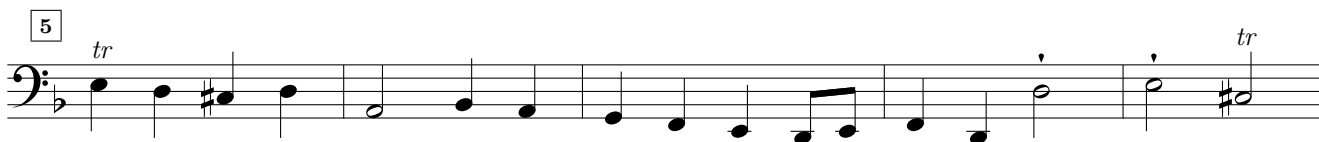
19

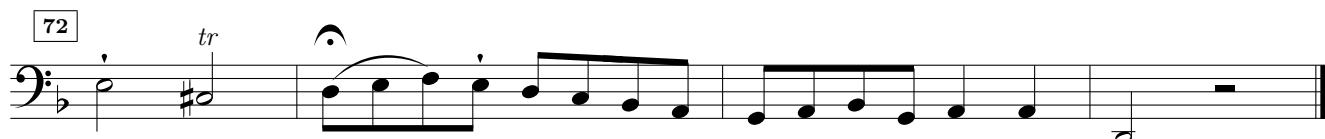
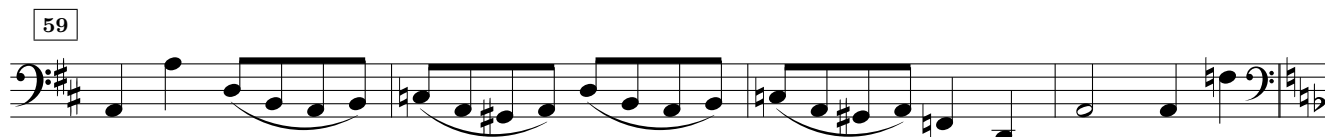
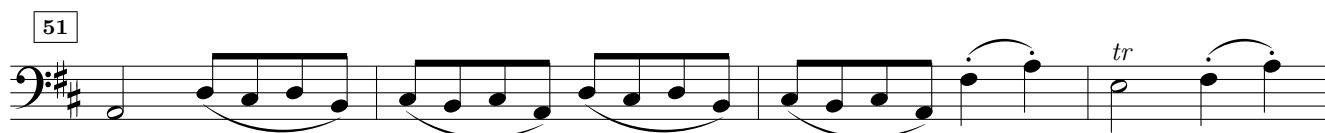
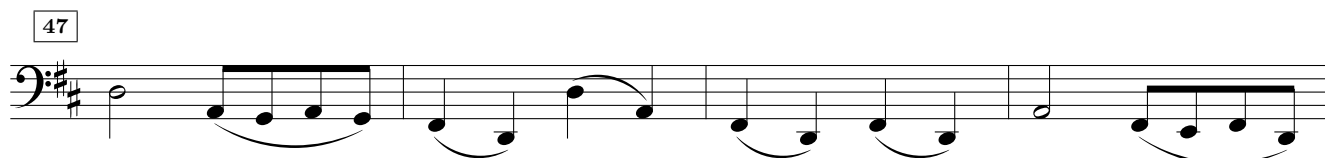
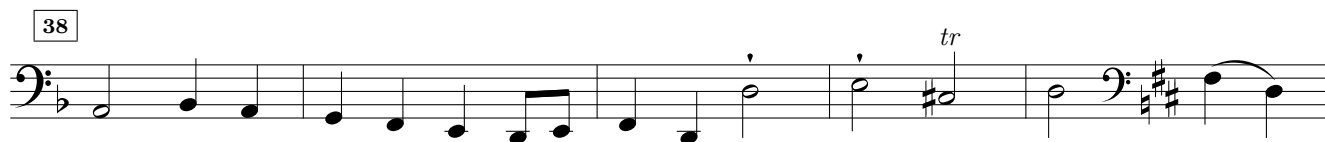
22

24

26

Presto





Sonata V

Vivace

Georg Philipp Telemann (1681–1767)

6

12

18

24

30

36

42

48

53

58

64

71

76

82

88

94

Cantabile

6

11

16

21

26

31

47

51

55

59

62

66

70

74

78

82

86

89

Sonata VI

Georg Philipp Telemann (1681-1767)

Vivace

4

7

10

13

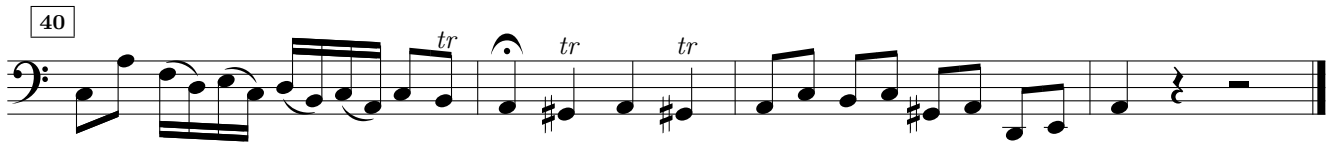
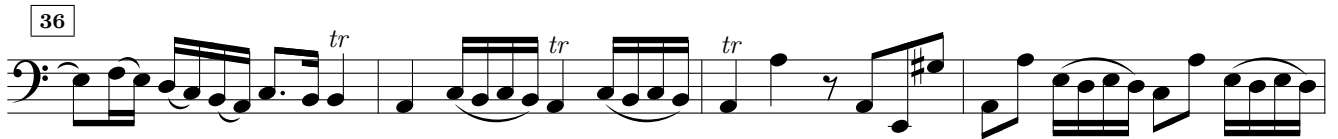
17

20

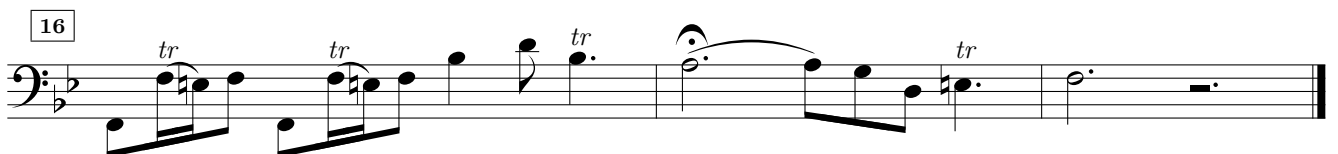
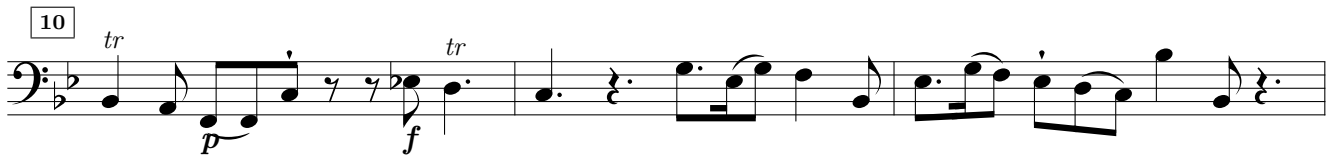
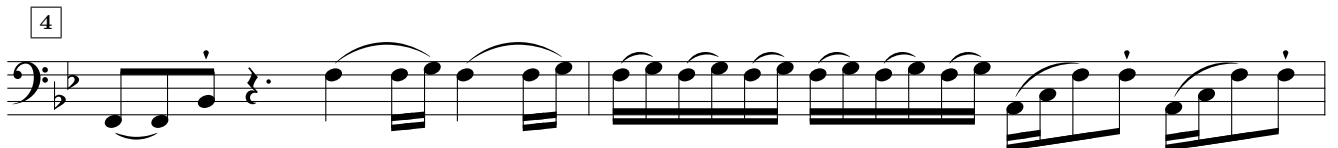
23

26

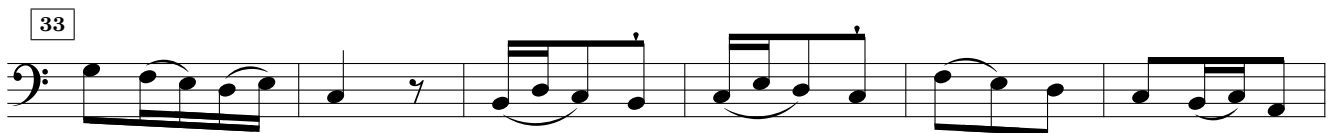
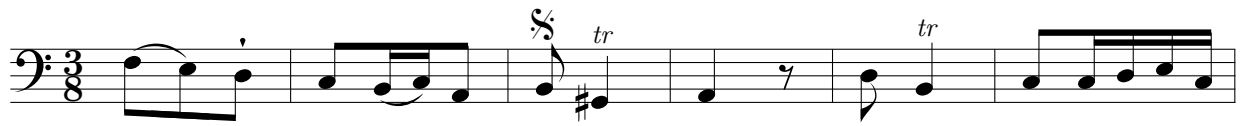
29



Soave



Allegro assai



65

72

78

85

92

99

106

113

121

128

134