

SINFONIE
BOSCARECIE

A VIOLINO SOLO E BASSO,
è due altri Violini ad libitum
à due, à trè, è à quattro

Opus VIII, Antwerpen 1669 (Venezia 1660)

Marco Uccellini
1603 – 1680

Published by Johan Tufvesson.

Non-commercial copying welcome

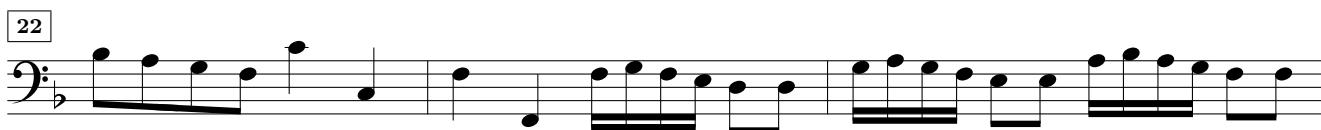
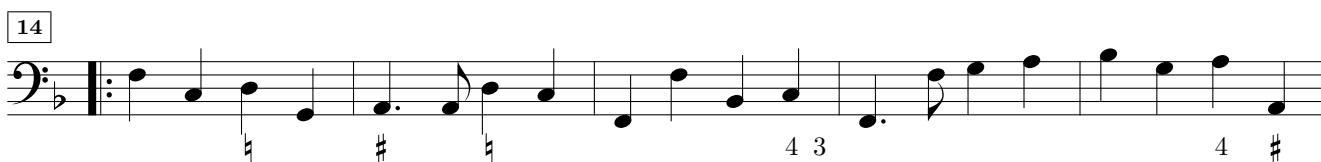
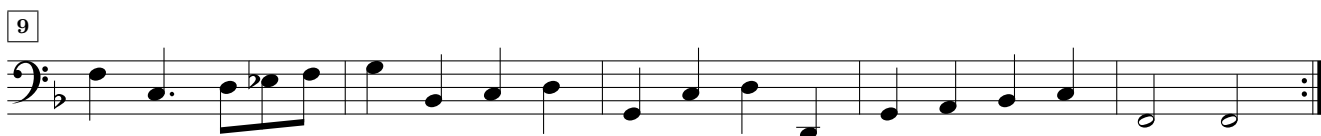
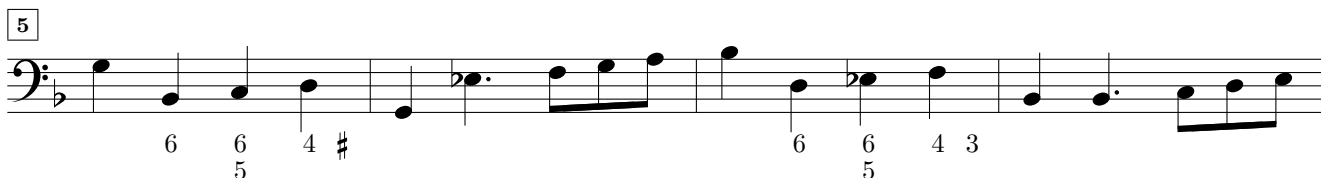
Revision : 1.3

B. Continuo e Violone

Symphonia 1

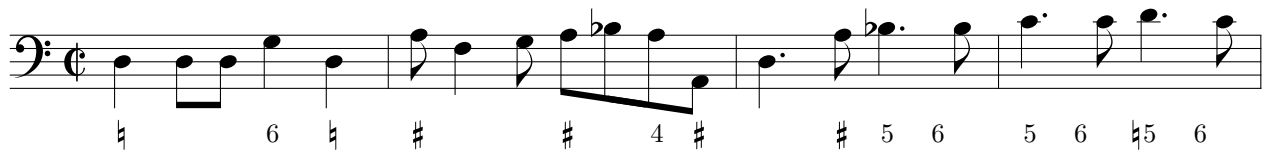
Allegro A Rovetta

Marco Uccellini (1603-1680)



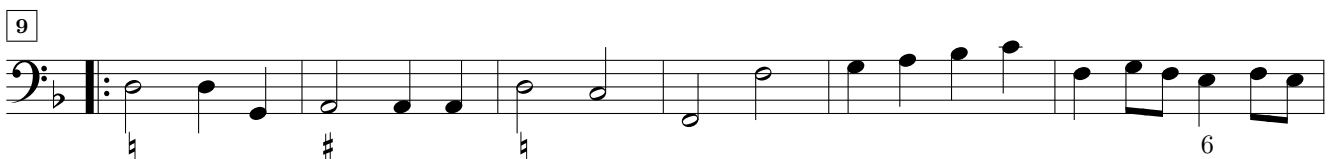
Symphonia 2

Allegro A Vesa



Symphonia 3

Allegro A Tavola



Symphonia 4

A Mattiola

4

8

12

16

20

24

27

Symphonia 5

A Padouana

5

10

Symphonia 7

Allegro A Gianina

5

11

17

21

26

32

Symphonia 8

Allegro A Vittale

5

9

13

17

21

21



26



31



Symphonia 9

Allegro A Gurana



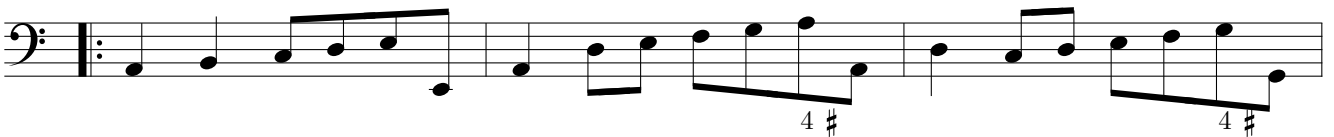
4



8



12



15



18



Symphonia 10

Allegro A Gallana

5

9

13

17

20

23

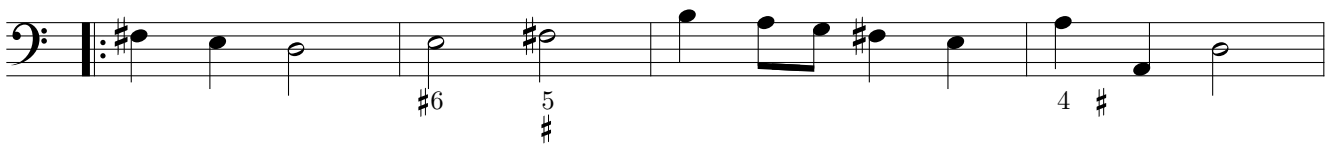
27

Symphonia 11

A Todeschina

7

13



17



Symphonia 12

Allegro A Carluccia



5



8



12



15



18



22



25



Symphonia 13

Allegro A Perdiera

6 6 # 6 7 6

4

6 6 #6 4 # 3

8

6 #6 # # # 4 #3

15

21

27

6 # 4 #3

Symphonia 14

Allegro A Foschina

4 3

4

4 3 6 6 6 6 6

8

12

4 3 5 6 5 6 5

16

6 5 6 6 5 4 # 3

Symphonia 15

Allegro? A Carissima

Musical score for Symphonia 15, measures 1-12. The score is written in bass clef with a common time signature (C). The key signature has one sharp (F#). The music consists of a single melodic line with various ornaments and fingerings indicated below the notes. Measure numbers 4, 8, and 12 are marked in boxes at the beginning of their respective lines.

Symphonia 16

Allegro A Granciflora

Musical score for Symphonia 16, measures 1-17. The score is written in bass clef with a common time signature (C). The key signature has two flats (Bb, Eb). The music consists of a single melodic line with various ornaments and fingerings indicated below the notes. Measure numbers 4, 7, 11, 14, and 17 are marked in boxes at the beginning of their respective lines.

Symphonia 17

Allegro/Adagio A Stucharda



5



8



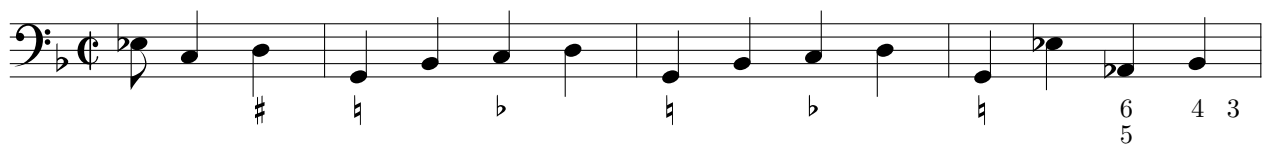
13



17

**Symphonia 18**

Allegro 'Argonauticha

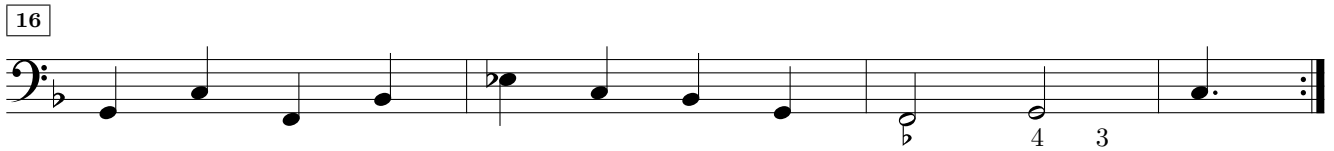
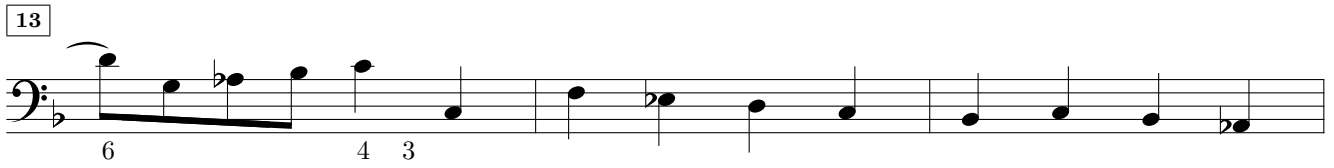


4



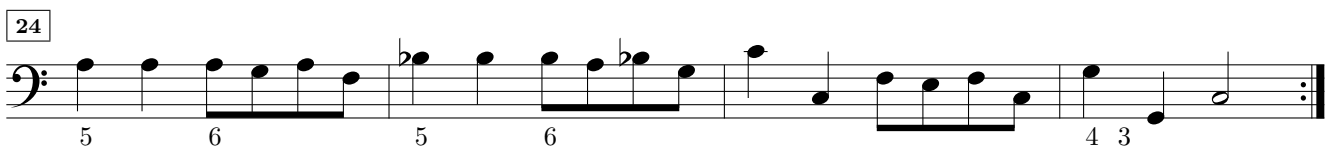
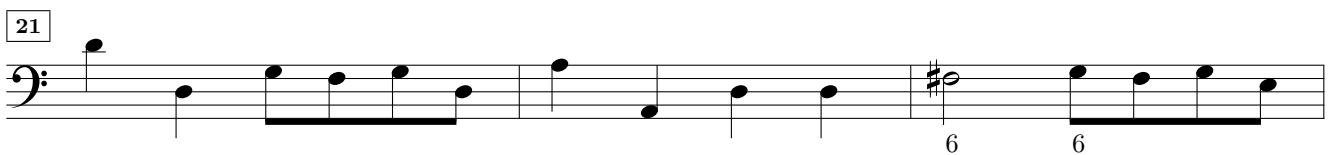
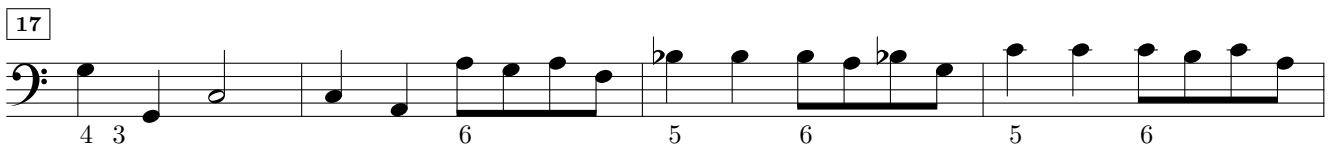
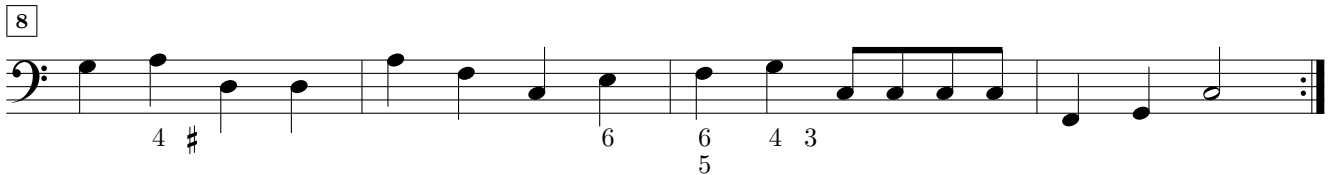
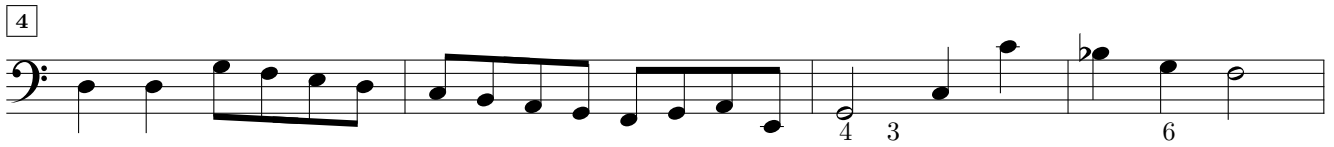
7





Symphonia 19

Allegro A Malcumira



A Virmingarda **Symphonia 20**

7

12

17

22

Allegro

26

32

37

42

48

53

Allegro? A Caferonia

5

10

15

6

6

6

Symphonia 22

Allegro A Sempre viva Presto?

5

9

14

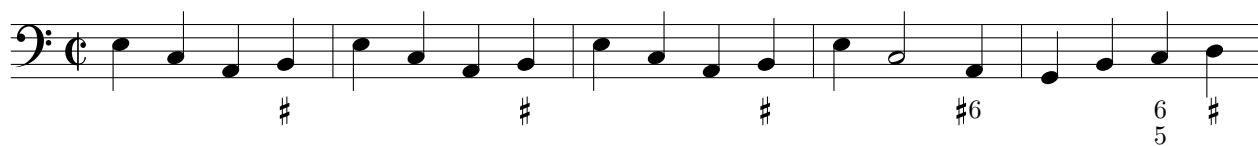
19

23

27

A Girifalcha

Symphonia 23



6



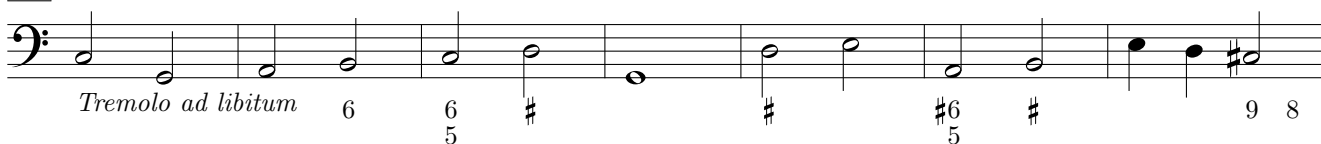
12



16



20



Allegro

27



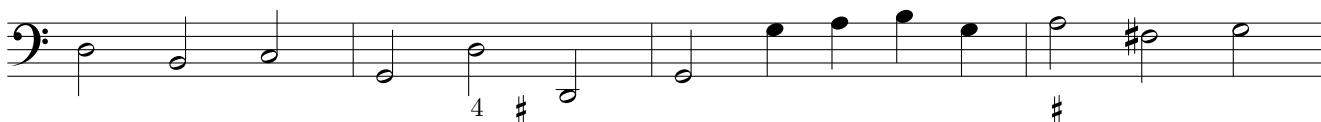
33



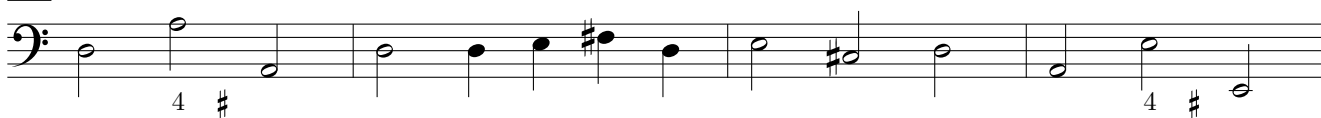
38



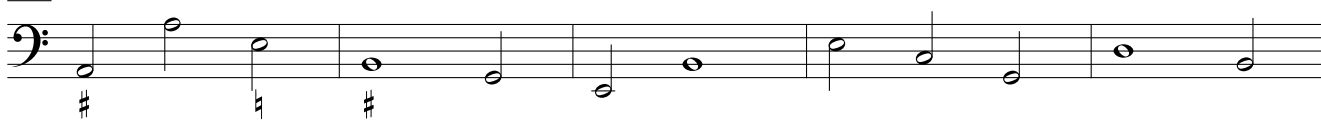
43



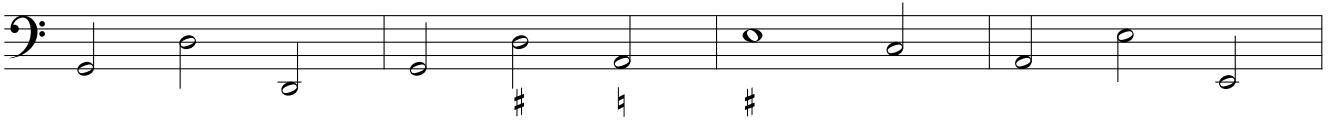
47



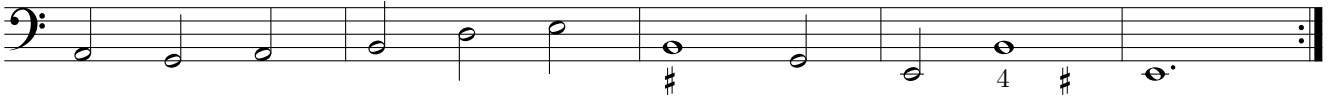
51



56



60



Symphonia 24

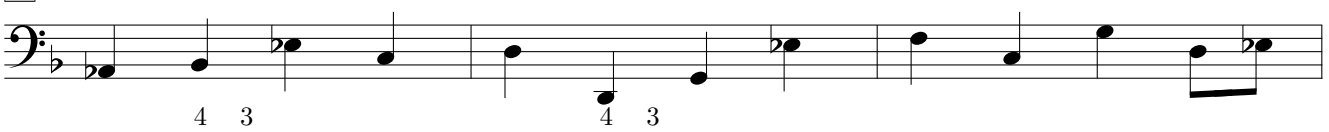
Allegro A Melibea



4



7



10



13



17



21



Symphonia 25

Allegro? A Cetraira



5



8



12



15



18



21



24



27



Symphonia 26

Allegro A Cretense

5

10

15

19

Symphonia 27

'Arcadicha

5

8

11

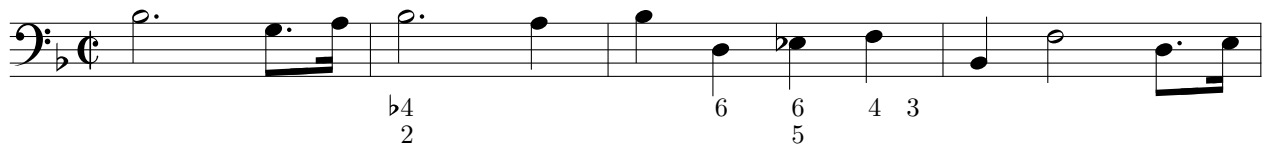
15

18

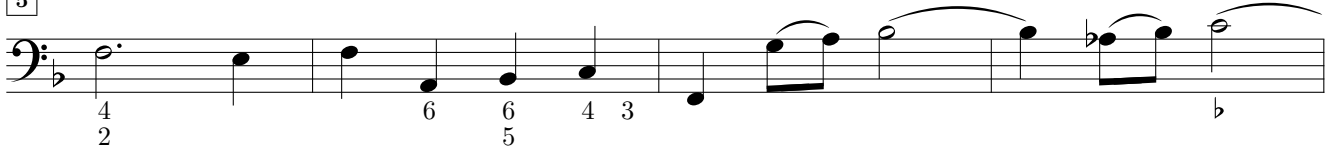
21

Symphonia 28

Adagio A Suavissima



5



9



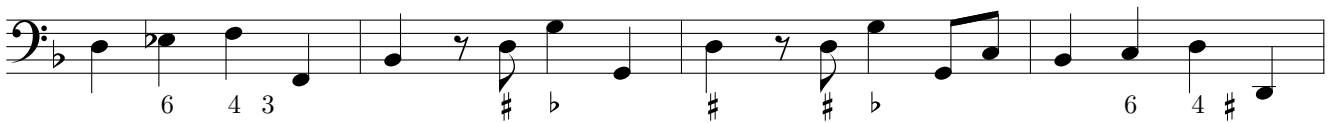
12



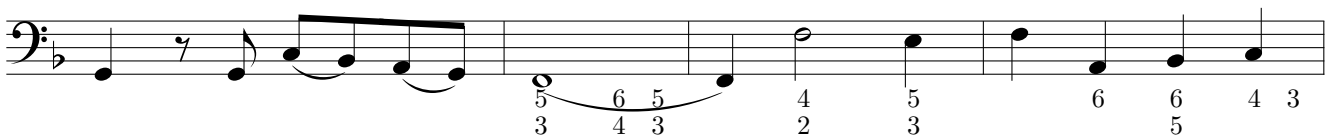
16 Allegro



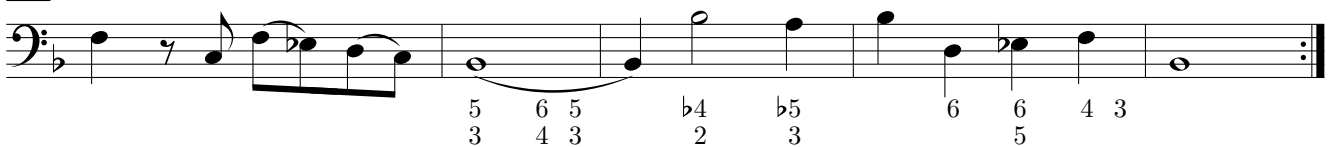
20



24



28

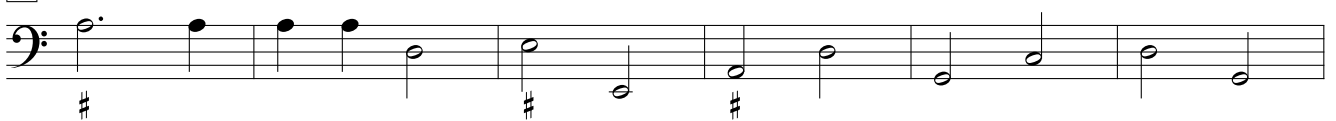


Symphonia 29

Allegro A Filistea



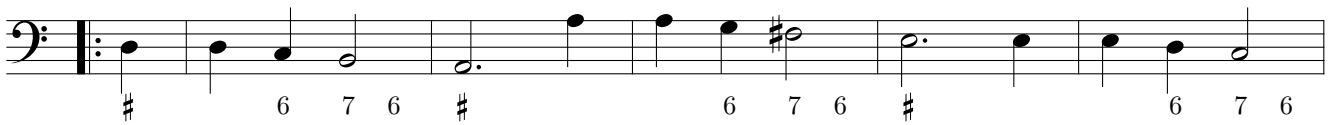
6



12



16



22



26

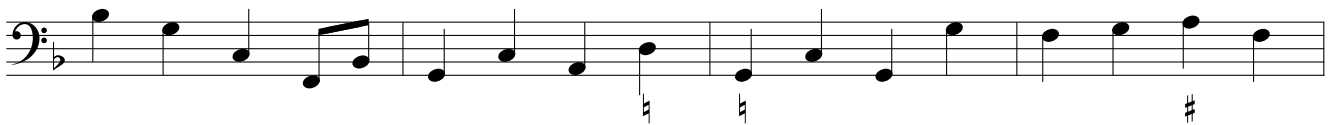


Symphonia 30

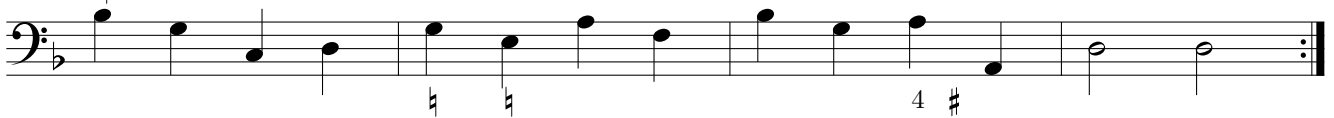
A Vice-comita



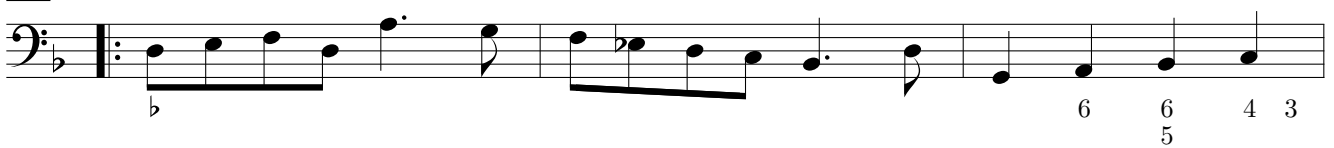
4



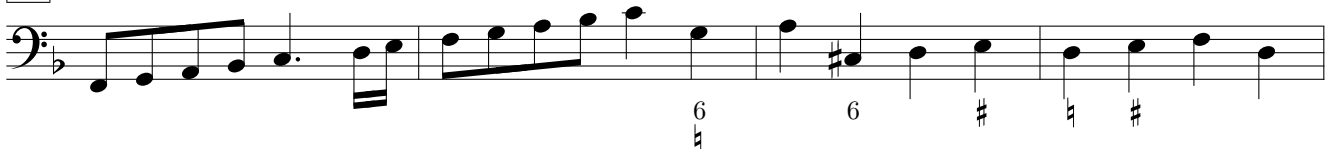
8



12



15



19



Symphonia 31

A Pegasea



4



7



10



13



17



20



23



26



29

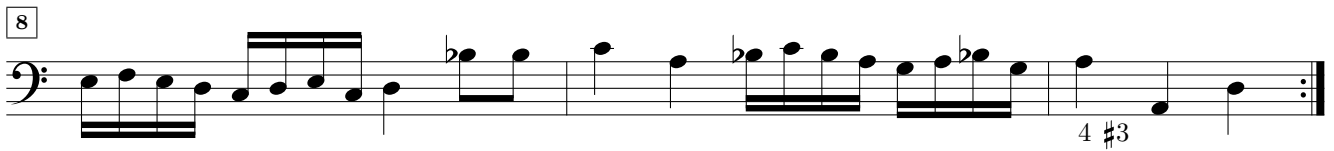
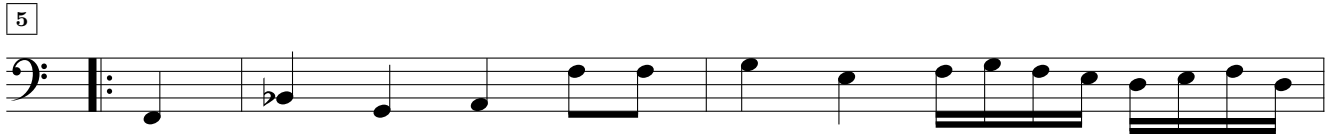
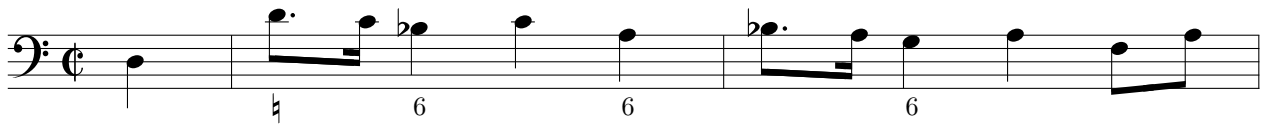


32



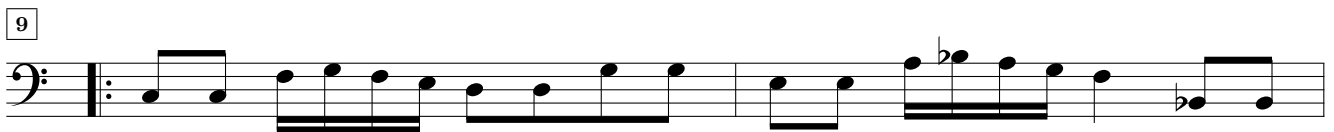
Symphonia 32

A Gaibari



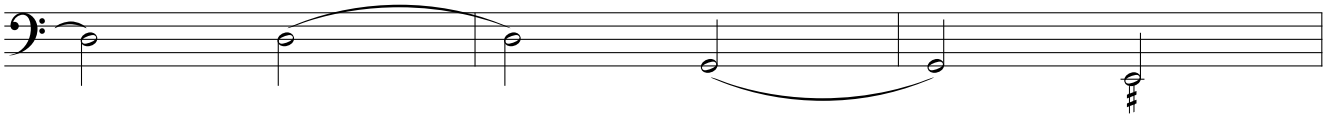
Symphonia 33

In Canon 'Ermocraticha

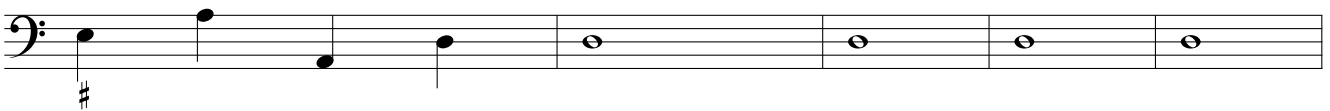


Symphonia 34**A Gran Battaglia**

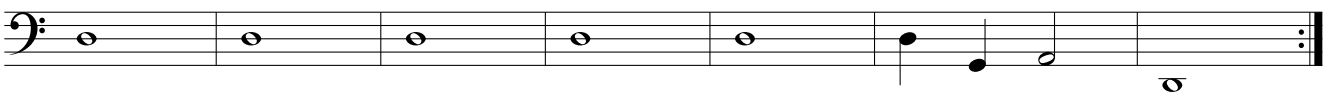
5



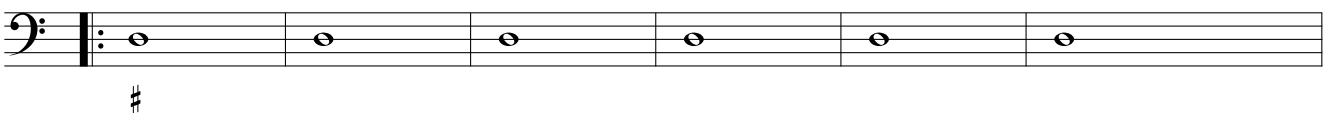
8



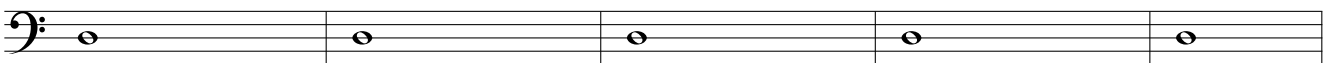
13



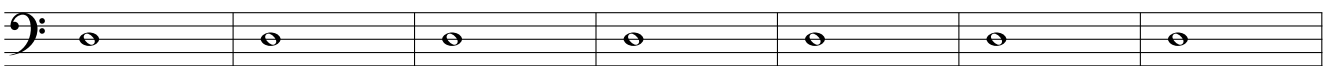
20



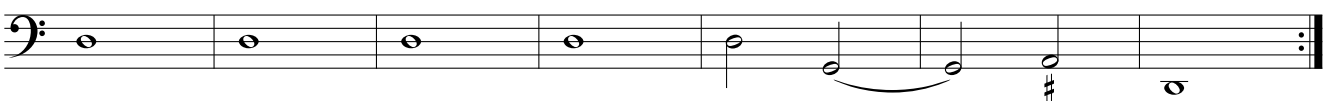
26



31



38

**Symphonia 35****A Rangona**

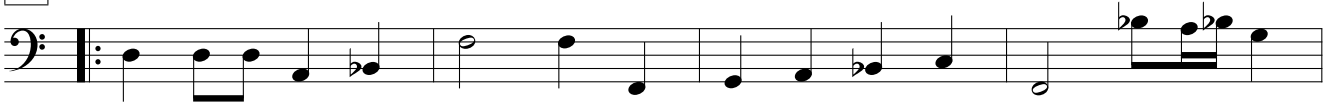
5



8



11



15



18



Symphonia 36

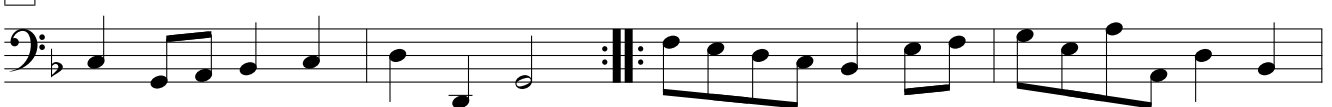
Allegro A Ghirardina



5



9



13



Symphonia 37

Allegro A Guidona



5



10



13



16

