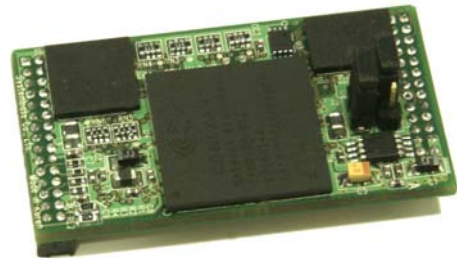


Eddy-CPU

Programmable Embedded CPU Module

Features

ARM9 (168MHz) Core Processor Module
 External 8-bit address / 8-bit data bus interface
 On-board 4MB Flash / 8MB SDRAM
 56 (26 + 30) Pin Header Interface
 10/100Mbps Ethernet PHY
 Max 17 Programmable GPIO Pins
 Low power consumption
 Development Kit, SDK, & API Support



Eddy-CPU is a high-performance embedded CPU module with ARM9 core processor. On this thumb-sized module, there is much more than you can imagine: 8-bit address and 8-bit data bus interface for connecting external UART, PHY interface for Ethernet connectivity, and 17 programmable GPIO pins. Enjoy the flexible and powerful features of Eddy-CPU to implement your own device with customized applications and hardware!

We Do the Hard Work, You Do the Easy Work!

Tired of investigating through thick databooks of your CPU and memory? Planning on implementing only a few hundreds or thousands of units but feeling helpless to meet the MOQ? Want to simply cut to the chase and work on your core application, rather than spending months to port Linux on the CPU and make it compatible with the memory and I/O? Eddy-CPU ships with built-in 32-bit ARM9 CPU with 168MHz clock, 4MB Flash memory, and 8MB SDRAM. Embedded Linux fully compatible with these hardware is in operation. All you have to do is focusing on your core application, owing to off-the-shelf convenience and readiness of Eddy-CPU. And all these features are embedded on a size even smaller than your thumb!



Eddy-CPU implemented on a Digital I/O board

Specifications

Network

Protocols	TCP, UDP, Telnet, ICMP, DHCP, TFTP, HTTP, SNMP 1 & 2, SSH, SSL
LAN Port	10/100Mbps MAC / PHY
Connection Type	Static IP, DHCP

Software

O/S	Embedded Linux (Kernel 2.4.x)
Mgmt. Tools	SNMP, Portview, Web
Terminal	Telnet, SSH
Application Upload	TFTP, FTP, Web
Web Service	Embedded Web Server

Hardware

Processor	32-bit ARM9 Processor with 168MHz
Flash Memory	4 MB
SDRAM	8 MB
GPIO	Max 17 Programmable IO Pins
Power Input	3.3V
Power Consumption	200mA
Dimensions	20.78 * 38mm
Weight	5.6g

Environmental

Operating Temp.	0 ~ 50 °C
Storage Temp.	-20 ~ 80 °C
Humidity	5 ~ 95% Non-Condensing

Approvals

CE Class A, FCC Class A, RoHS Compliant

Ordering Information

Eddy-CPU Programmable embedded CPU module

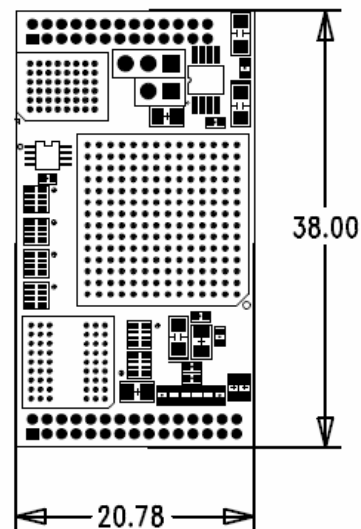
Package Contents

Eddy-CPU Eddy-CPU module,
CD with tools and documents

Pin Assignments

J3				J4			
Pin	Desc.	Pin	Desc.	Pin	Desc.	Pin	Desc.
1	HA7	2	HA6	1	GPIO5	2	GPIO6
3	HA5	4	HA4	3	GPIO7	4	GPIO8
5	HA3	5	HA2	5	GPIO15	5	GPIO16
7	HA1	8	HA0	7	GPIO17	8	GPIO17
9	IO_CS#	10	IO_WR#	9	GPIO19	10	GPIO21
11	GND	12	IO_RD#	11	GPIO22	12	GPIO24
13	HRST#	14	HRST	13	GPIO25	14	GPIO26
15	HD7	16	HD6	15	GPIO27	16	GPIO31
17	HD5	18	HD4	17	GPIO39	18	GND
19	HD3	20	HD2	19	GND	20	CAP
21	HD1	22	HD0	21	LAN_TX+	22	LAN_TX-
23	GND	24	3.3V	23	GND	24	GND
25	GND	26	3.3V	25	LAN_RX+	26	LAN_RX-
				27	LED1_VCC	28	LED2_VCC
				29	LED1_DRV	30	LED2_DRV

Dimensions



(Unit : mm)