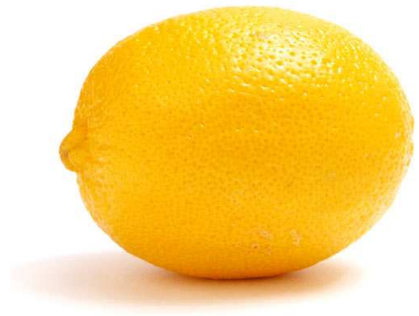


LemonIDE™ for Linux

Integrated Development Environment for Eddy v2.0

Features

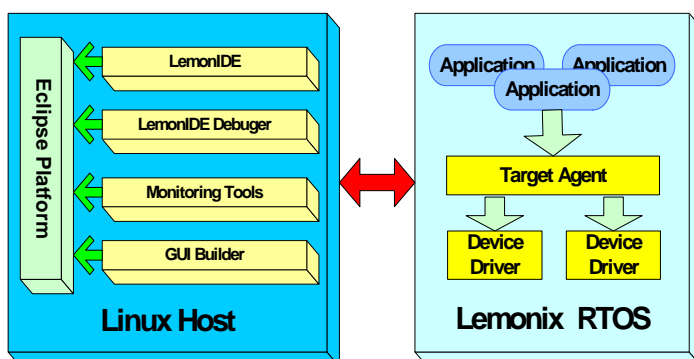
Eclipse based IDE
GUI Source Code Editor
Target System Application Remote Execution
Target System Remote Monitoring
Remote Debugger
Project Management Support
Cross Compile Environment
Makefile Auto Creation
Runs on Linux Host Systems



LemonIDE is an integrated development environment (IDE) for Eddy modules. Built on open source Eclipse framework, LemonIDE provides an easy & effective GUI (Graphical User Interface) for application and firmware developments that runs on SystemBase's embedded real time Linux, Lemonix.

LemonIDE encompasses GNU C/C++ Compiler, Source Code Editor and Debugger delivering a one-stop development environment to embedded developers relieving inconveniences of preexisting TUI(Text User Interface). Commands for compiler and debugger no longer needed to be memorized and punched in as LemonIDE's common GUI provides conveniences of simple mouse click execution.

Makefile Auto Creation, Auto Source Code Completion, Remote Debugging, Plug-in Support and Target System Monitoring features of LemonIDE allows developers to concentrate solely on their programs radically enhancing embedded software productivity.



LemonIDE™ provides a convenient one stop turnkey for your embedded software development

Integrated Development Environment

Provides software development conveniences and efficiency.

Multi project management, Makefile Auto Creation, Syntax Highlighting, Multi File Editing, ARM-Linux Cross Compiler, gdb Debugger, Target System Monitoring, Project Import/Export features supported.

Debugging

Various GUI based debugging mode supported. Target System Remote Debugging and Trace Point/Frame Debugging features supported for easy error correction.

Memory, Stack, Signal, Register Status Information also provided for easy error detection.

Monitoring

Monitoring Program is executed on Target Systems and relates with GUI IDE providing Target System Information, File Transfers and Remote Execution capabilities.

Monitoring Tools allows continuous real-time monitoring of the Target System. Target System's CPU, Memory, Process and Interrupt Information can be reviewed graphically.

Eclipse

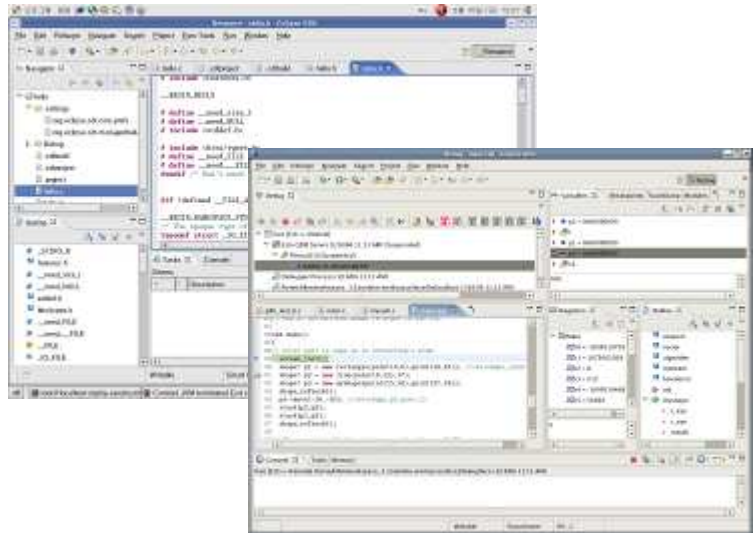
- Eclipse SDK 3.2.2
- CDT core 3.1.2
- CVS core 3.2.2

Compiler

- GNU C/C++ 4.1.1
- ARM-Linux Cross Compiler

Editor

- C/C++ Source Code Editor
- C/C++ Auto Code Completion
- Syntax Highlighting
- Makefile Auto Creation
- Source Browser
- Multiple File Edit through Tab Interface
- File Search & Advanced Search Support
- File to Designated Editor Association Support
- Explicit Explanation Support on Errors
- Auto Build Support
- Remote Execution Support



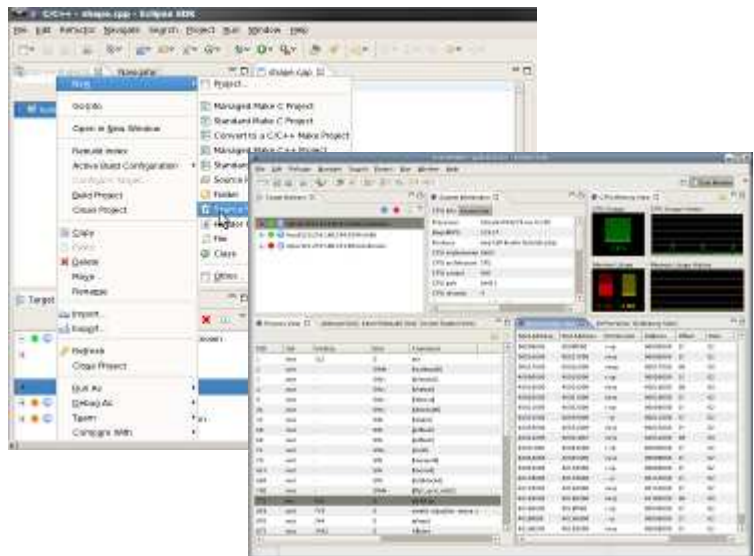
Resource View and Visual Source Code Debugger

Debugger

- GNU gdb 6.3.90
- Visual Source Code Debugger
- Trace Point & Trace Frame based Debugging Support
- Remote Debugging Support
- Multi-Thread Debugging Support

Target Monitor Tool

- Targetview Plug-in 1.0.0
- Monitor Plug-in 1.3.4



Project Manager and Target MonitorTool

Host System

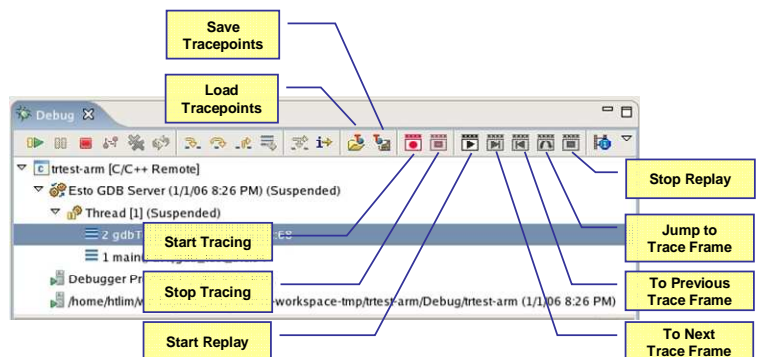
- Linux Installed System
- JRE 5.0 or above required
- Virtual Utility aided installation possible in Windows Environment

Tested Linux Distro List

- Fedora Core 4, 5, 6
- Redhat 9.0
- Redhat Enterprise Linux
- Ubuntu Linux 6.x, 7.x
- Debian 4.0
- SUSE Linux
- CentOS 4.5
- Asianux

Target System

- Eddy-CPU v2.0
- Eddy-S1/PIN v2.0
- Eddy-S1/DB9 v2.0
- Eddy-S1/DB9-PoE v2.0
- Eddy-WS1/PIN v2.0
- Eddy-WS1/DB9 v2.0
- Eddy-WS1/TTL v2.0



Debugger base on Start and Stop

Ordering Information

LemonIDE is included in Eddy Development Kit and is not sold separately.